

HIV/AIDS

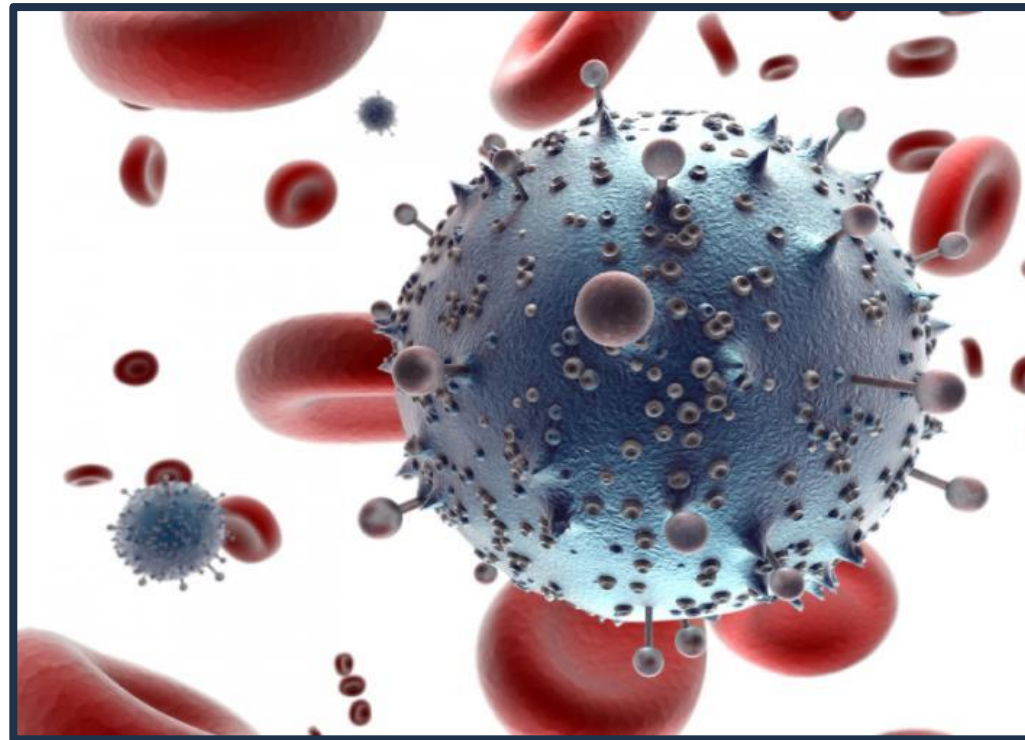


MIRACLE
FOUNDATION

What is HIV?



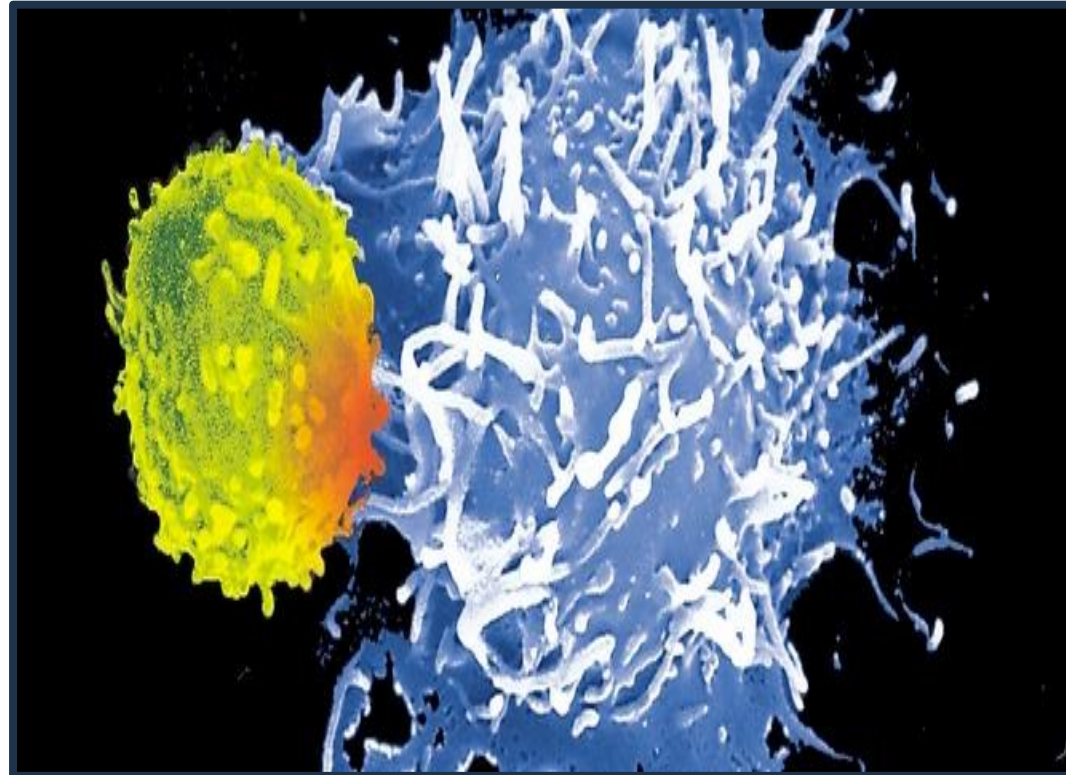
Human Immunodeficiency Virus



HIV Destroys Part of the Immune System



HIV Affects T Cells



Living with HIV



HIV and AIDS





HIV/AIDS in India – 2017*

- 2.1 Million people living with HIV
- 88,000 new HIV infections
- Overall, India's HIV epidemic is slowing down. Between 2010 and 2017 new infections declined by 27% and AIDS related deaths fell by 56%

*UNAIDS Data 2018

How is HIV Spread?





How is HIV Spread?

- Unprotected sexual intercourse (most common method of transmission)
- Kissing only if there is a sore in the mouth
- Sharing needles or syringes
- Blood transfusion with untested blood
- Mother to child during childbirth or breastfeeding

Preventing HIV/AIDS



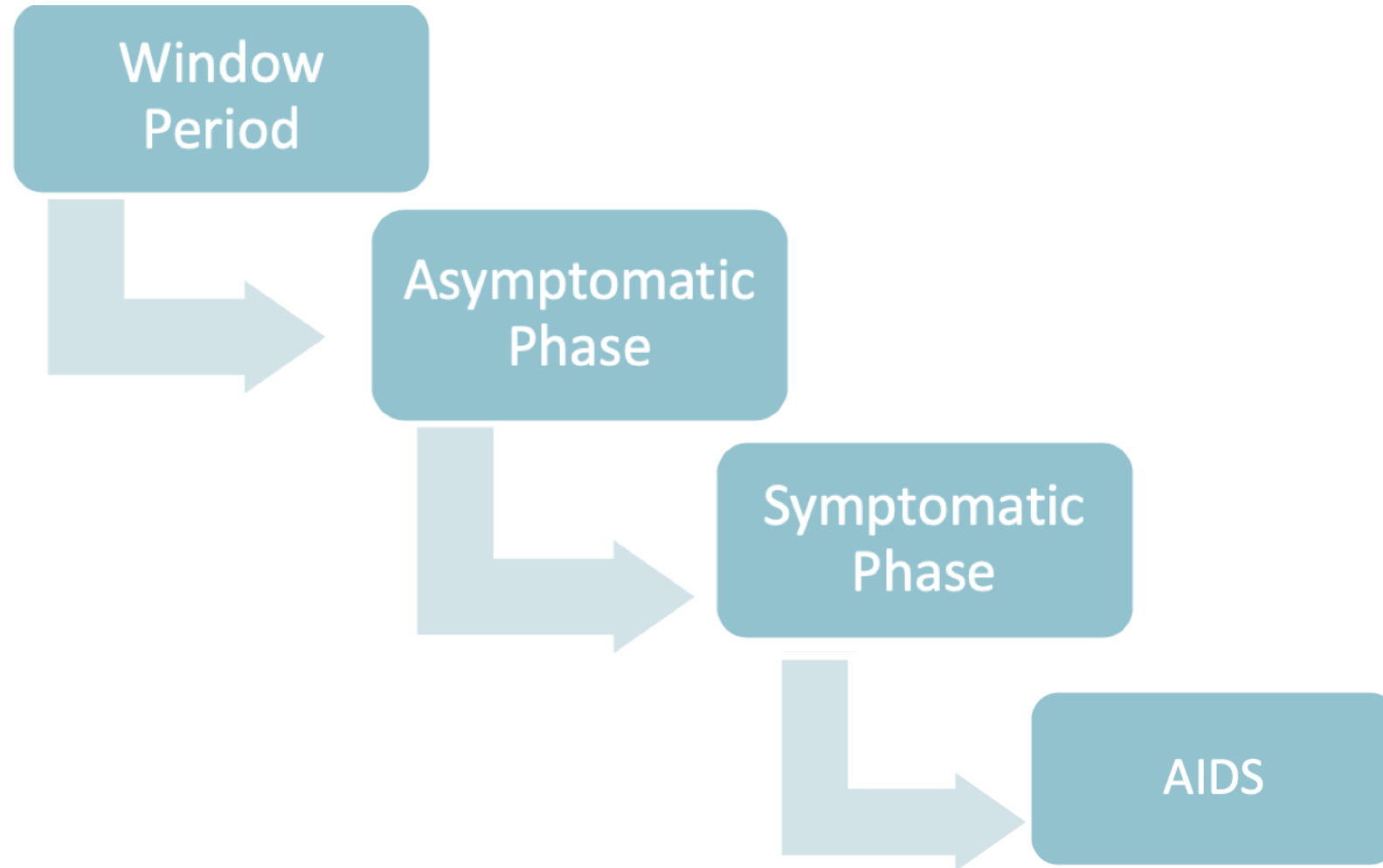
**It's not who you are,
but what you do that matters.**

Symptoms of HIV





Phases of HIV/AIDS



Diagnosis and Treatment



Care and Support



Thank you!

